

CHAMOT

Recombinant Human PD-L1

CM191-5HP

CM191-20HP

CM191-100HP

CM191-500HP

CM191-1000HP



CHAMOT

喬默生物技術(上海)有限公司
CHAMOT BIOTECHNOLOGY CO., LTD.

CONTENT

1 产品简介

2 产品组成

3 产品储存

4 产品使用

Recombinant Human PD-L1

编号:	CM191-5HP CM191-20HP CM191-100HP CM191-500HP CM191-1000HP	规格:	5 µg 20 µg 100 µg 500 µg 1 mg
类别:	重组蛋白	应用:	Functional Assay

产品简介

描述: PD-L1 regulates immune responses by binding to the immunoinhibitory receptor PD-1 on activated T-cells and B-cells. This interaction can suppress T-cell responses by inducing apoptosis and arresting cell cycle progression. In cancer, PD-L1's role in reducing antigen-specific T cells can promote tumor growth and immune evasion. As a result, PD-L1 is considered as a potential therapeutic target for autoimmune diseases and cancer.

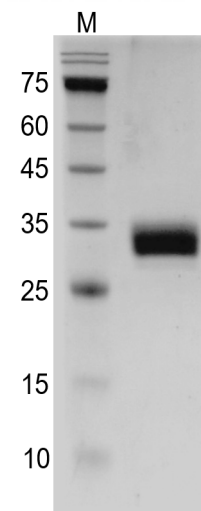
来源: *HEK293 cell*

纯度: >95% as determined by SDS-PAGE.

生物学活性: Measure by its ability to induce adhesion in T-cell enriched PBMC cultures using a concentration range of 1-2 µg/mL.

内毒素检测: < 0.1 EU per 1 µg of the protein by the LAL method.

蛋白序列: A DNA sequence encoding Human PD-L1 Protein (#Q9NZQ7.1)(Phe19-Arg238) was expressed with polyhistidine tag at the C-terminus.



SDS-PAGE analysis of recombinant human PD-L1

产品组成

成分: 从含有 1X PBS, pH 7.4 溶液中冻干的蛋白质.

产品储存/运输

产品形式	储存温度	储存时间
冻干粉	-20°C至-80°C	自收到之日起1年
重悬液 (初始)	2°C至8°C	不超过1周
重悬液 (经稀释)	-20°C至-80°C	3到6个月

运输方式: 蓝冰

产品使用

- 1、开盖前，建议3000-3500rpm离心5min。
- 2、推荐使用无菌水重悬冻干粉，溶液浓度不低于100 μ g/mL，不高于1mg/mL，并室温静置至少20min以充分溶解。勿涡旋剧烈振荡。
- 3、重悬后的溶液，2-8°C无菌保存不超过1周。
- 4、如需长期保存，推荐使用无菌的含载体蛋白（如0.1%BSA、10%FBS或5%HSA）的溶液进一步稀释（不低于10 μ g/mL）后分装保存，-20°C至-80°C无菌保存3到6个月。无血清实验需求时，可更换为5%海藻糖溶液作为载体。避免反复冻融。

WB= Western Blot; IP= Immunoprecipitation; IF= Immunofluorescence; IHC= Immunohistochemistry;
FACS= Fluorescence activated Cell Sorting; FA= Functional Assay